

Mimaki™

Give Your Creativity A Glow Up



TS330-1600



TS330-1600

Give Your Creativity A Glow Up

Designed for textiles and apparel printing, TS330-1600 is a water-based dye sublimation inkjet printer achieving superb productivity of 69m²/h in Draft mode and high image quality through Mimaki printing technology. Additionally, the printer incorporates improved conveyance mechanism and renewed usability, enabling stable and constant high quality printing.

01 Achieving high productivity / high image quality

38% faster printing speed than a conventional model in Draft mode! *1

"Maximum speed mode: 135m²/h; Draft mode: 69m²/h"

Even in Draft mode, the output speed is approximately 1.3 times faster than conventional Mimaki printers, and the excellent printing technology enables even and uniform output of dark color prints during low passes. TS330-1600 combines high production and high quality to provide the printing quality meeting the requirements of the textile market.

*1: Comparison TS330-1600 (print speed 69m²/h: 600×600 dpi 2P Bi) and TS55-1800 (print speed 50m²/h: 600×600 dpi 2P) at equivalent image quality

Introduction of new ink dispensing technology for high image quality

New Drop Technology, the "Mimaki Weaving Dot Technology"

A new ejection control technology reducing the unevenness and smearing of the ink, achieving higher image quality, with better solid coloring and smoother images than ever before.

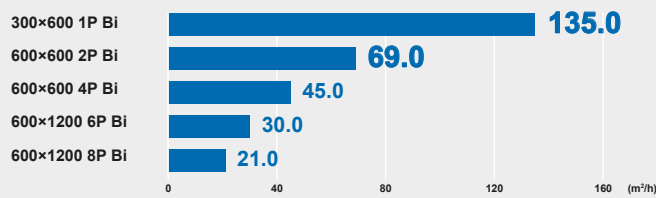


Even and uniform solid coloring density at low pass!
Reduced banding with better solid quality.

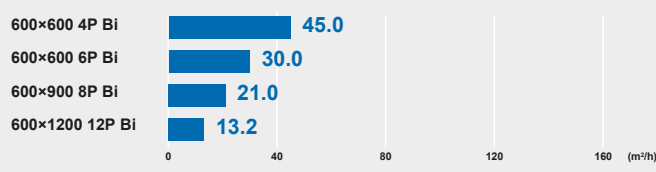
600×600dpi 2pass



4C Ink sets



6/ 7/ 8C Ink sets



Two options for low running costs in production

1 10kg ink-tank supply unit

10kg Sb411 ink (B/M/Y/K) ink-tanks newly available^{*2}. Enables long period continuous output, such as in all night operations by mounting replacement ink-tanks on the optional 10kg ink-tank supply unit (sold separately). The tank achieves significant reductions in running cost and operation time over the standard 2 liter packs.

*2: Lb/Lm/Lk/Fy/Fp inks are available only in 2L ink-packs and can be used in parallel with the 10kg ink-tanks

2 Mini jumbo roll unit

The use of long mini jumbo roll transfer paper^{*3} can further reduce running costs. This reduces the downtime for media replacement as well as the burden on operators.

*3: Mimaki genuine media "Mini Jumbo Roll Mimaki Vision™ Jet-X Mini-162" (Supplied by Neenah Coldenhove)
Specifications: width 1,620mm, roll length 2,500m, basis weight 57g/m²



02 Mimaki print core technology for stable operation and stable image quality

Stable operation by new conveyance mechanism with renewed conveyance control

1 Take-up device

Drive motors for the take-up device are mounted on both left and right sides. This arrangement distributes the load of wind-up, improving the winding stability, along with a renewed mechanism to reduce media meandering.

Augmented drive motor



Media edge guide

2 Media edge guide

By aligning the edge of the media to the guide, it prevents the media from meandering during winding and ensures stable feeding. The small size improved to an easy attachment/remove to/from paper core.

3 Post-heater

High durability materials are used for the post heater to reduce abrasion caused by the transfer paper feeding, preventing transfer paper feeding failures to ensure stable printing.



Heater adopting new material

Inheritance of Mimaki print core technology supporting stable operation and pursuing beauty in print

- DAS (Dot Adjustment System)** — The printer automatically adjusts and optimizes the dot positioning and feed volume affecting print quality, corresponding to changes in the target media and printing conditions.
- Waveform Control** — Sophisticated ink ejection control unique to Mimaki printers ejects near-spherical droplets of ink for sharp expression of text, ruled lines and edges.
- MAPS4 (Mimaki Advanced Pass System4)** — Automatic optimal pattern selection according to printing conditions reduces banding and unevenness of color by introducing gradations to borders of passes while printing.
- Variable Dot Control** — Three different ink drop sizes, including a minimum drop quantity of 4pl, are intermingled to achieve smooth, high-quality prints with minimal graininess.
- NCU/NRS** — A sensor detects nozzle conditions and cleans them automatically. When nozzle clogging cannot be resolved, alternate nozzles are used to continue printing without slowing down.

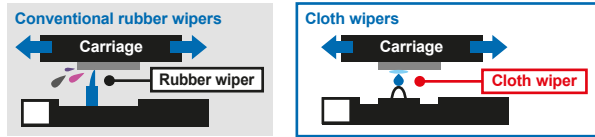
03 Enhanced user friendliness

New functions for daily maintenance and remote operation have been added to enhance the convenience of operation.

Featuring a new cleaning mechanism improving maintainability while reducing downtime, and a V-shaped cutting function improving media transportability.

1 Introduction of cloth wiper - Improved removal performance for thick adhesive clots on the nozzle surface

Designed to soak up ink from the nozzle surface, cloth wipers reduce the amount of ink splattered on the head station when compared to conventional rubber wipers. This reduces the frequency of maintenance around the head and cap and makes work easier.



Cloth wiper

2 Easy-to-use maintenance space

A larger space for head maintenance making daily care easier, helps keeping the machine in optimum condition.



Maintenance space

3 Automatic media cutting "V-shape cutting function"

The V-shape cutting function tapers the media into a V-shape before wrapping it around the paper core. You can choose between the conventional cutting method and the V-shape cutting method on the selection screen. The V-shape allows the center of the media to be precisely attached to the paper core, reducing the potential for human error. Applying V-shaped cuts to unused odd ends of the media for single point of attachment also helps to conserve the media.

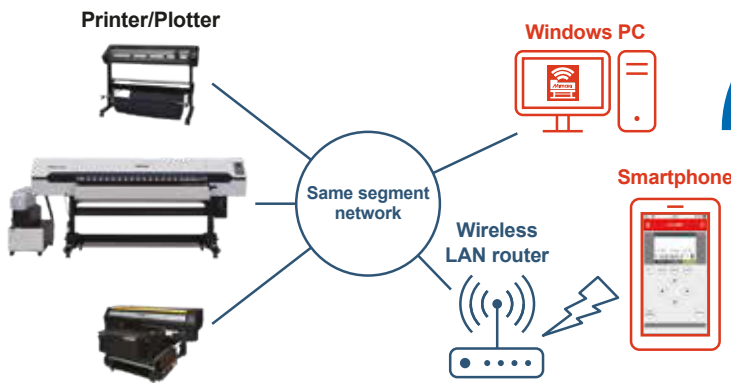


V-shaped cut

MRA (Mimaki Remote Access) - Enables printer operation via smartphones.

The application allows you to monitor the status of the machine and operate the panel from a remote location within a same-segment network. You can check the list of ink types, heater temperature, notification alerts, etc. from your smartphone and operate the machine with the same feeling as the actual operation panel.¹⁴ You can also turn on the heater of the machine before going to the job site, or output nozzle check patterns in advance.

¹⁴: When the printer is turned on.



Remotely controlled from your smartphone!

Images are for reference only.

04 Mimaki "Sb411", high quality sublimation transfer ink with a proven track record

1 Wide variety of ink colors, including fluorescent colors⁵

Mimaki offers a wide range of ink colors and ink sets including fluorescent colors. Our ink lineup is suitable for vivid and eye-catching soft signs and fashion apparel with high design quality.

⁵: Fluorescent colors (Fy: fluorescent yellow, Fp: fluorescent pink)
TxLink4 support for fluorescent colors is scheduled for April 2022.

Ink sets	
4C	
MBIYK	●●●●
6C	
MBIYK+FyFp	●●●●●●
MBIYK+LmLbI	●●●●●●
7C	
MBIYK+LmLbIlk	●●●●●●●●
8C	
MBIYK+LmLbIFyFp	●●●●●●●●

2 Inks supporting stable image quality

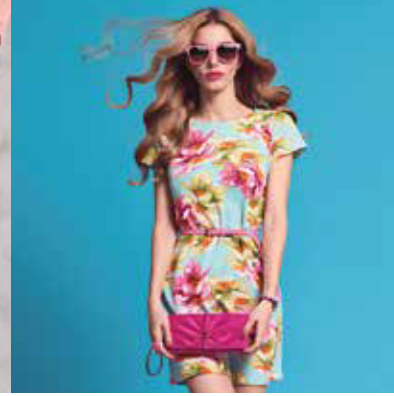
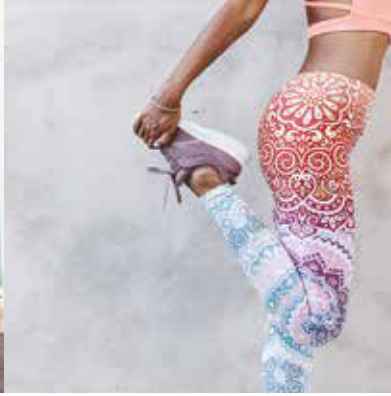
The low settleability of the dye enables constantly stable firing of the ink, suitable for continuous unattended extended printing sessions. It is also excellent in leaving the printer unattended when it stops, and has improved cleaning recovery. With its highly reliable quality, Sb411 is able to reproduce prints abundant with delicate lines and rich gradations of color expression.



3 Environmentally friendly inks

All colors are certified by a third-party organization under "ECO PASSPORT" as being safe. The certification ensures the dyes and pigments used for coloring textile products, as well as the chemical additives used to enhance the functionality of inks, do not contain any harmful ingredients. This is one of the world's foremost safety standards clearing not only Japanese safety regulations, but also the stricter regulations adopted by various countries. The Sb411 series of inks are designed to reduce the amount of smoke emitted during sublimation and maintain a clean working environment, and the use of aluminum ink packs reduces the amount of waste when replacing inks.





Selectable software You can choose either RasterLink7 or TxLink4 Lite in order to suit your jobs.

Raster Link 7

Combination of upgraded usability and functionality

- Improves reproducibility of special effects (such as transparency) of PDF data
- Increases RIP processing speed of PDF data by 25% on average
- Prints out the variable data by Variable print function
- Displays frequently used setting and pop-up windows

TxLink4TM Lite

- Parallel RIP improving production efficiency
- 16-bit rendering for smoother gradation expression
- Fluorescent inks as a complementary color of process colors to achieve vivid color reproduction
- Possible to add logos, seam allowance and barcode etc. by Image add-on function

■ Product specifications

Item	TS330-1600	
Print head	On-demand piezo head (2 staggered layout)	
Print resolution	300, 600, 900, 1200 dpi	
Maximum printable width	1,610 mm (63.4 in)	
Media	Max. width	1,620 mm (63.8 in)
	Roll diameter	φ250 mm (9.8 in) or less
	Roll weight	45 kg (99.2 lb) or less
	Coer dia.	2/3 in
Ink set	4/6/7/8 C	
Ink (Type/Color)	Sb411 (Bl, M, Y, K, Lbl, Lm, Lk) Sb410 (Fy, Fp)	
Ink capacity	2 L ink pack / 10 kg ink tank	
Print gap	Manual adjustment by 3 levels (3.0/3.5/4.0 mm)	
Interface	Ethernet 1000 BASE-T / (USB2.0 High-speed)	
Power	Single phase AC100-120/200-240V±10% 50/60Hz±1Hz	
Power consumption	Main unit: Max. 1,440 W or less Standard: 800 W	
Dimensions (WxDxH)	3,170 × 820 × 1,305 mm (124.8 × 32.3 × 51.4 in)	
Weight	240 kg (529.1 lb)	

■ Supplies

Item	Code	Remark	
Dye sublimation (transfer) ink* Sb411 2L ink pack ECO PASSPORT certified ink	Blue	SB411-BLT-2L	
	Magenta	SB411-MT-2L	
	Yellow	SB411-YT-2L	
	Black	SB411-KT-2L	
	Light Blue	SB411-LBT-2L	
	Light Magenta	SB411-LMT-2L	
	Light Black	SB411-LKT-2L	
	Fluorescent Yellow	SB410-FPT-2L	
Dye sublimation (transfer) ink* Sb411 10 kg ink tank ECO PASSPORT certified ink	Blue	TBD	Supported later
	Magenta	TBD	
	Yellow	TBD	
	Black	TBD	
Flushing liquid 03 220 ml	FL003-Z-22	Flushing liquid for head cleaning	
Flushing liquid 03 2 L	FL003-Z-2L	Flushing liquid for ink replacement	

■ Options

Item	Code
10 kg ink tank supply unit	OPT-J0529
Mini Jumbo roll unit for TS330	TS330 Mini Jumbo roll unit
Small relay box	OPT-J0370
Relay box2	OPT-J0407

Distributed by
Signtrade
www.signtrade.com

TOLL FREE - 800 SIGNTRADE | DUBAI - U.A.E. TEL : +971 4 2681828 | Fax : +971 4 2694328 | E-mail : info@signtrade.com
UAE ★ KSA ★ QATAR ★ OMAN ★ BAHRAIN ★ KUWAIT ★ PAKISTAN ★ KENYA