

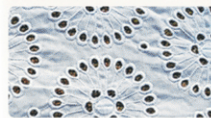
ST-TEC Laser

ST-L1325

(150W/180W/200W/300W/450W)



Case Show



Cloth



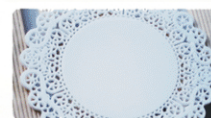
Leather



Bamboo and wood products



Organic glass



Rubber



Paper



Crystal



Acrylic Product

Applicable Materials

Cloth, leather, rubber, paper, bamboo and wood products, crystal, organic glass, plastic, film, canvas, etc.

Product model	ST-L1325
Type of laser tube	Sealed CO ₂ laser tube (glass tube)
Laser power	150W/180W/200W/300W/450W
MAX empty running speed	20m/min
Transmission mode	Servo + screw
Processing area	1290x2480mm
Repeatable positioning speed accuracy	±0.05mm
Power supply demand	220V 50Hz
Positioning way	CCD edge positioning
Environmental requirements	0-40°C, 0-90% relative humidity
Floor space dimensions	3600x1900x1300mm
The weight	800KG

Applicable Industries

Clothing proofing, large format cutting, leather industry, shoes industry, decoration industry, furniture industry, advertising decoration industry, packaging and printing plate making industry, model industry, craft gift industry, etc.

Performance Characteristics

1. Most of the hardware adopts imported accessories, which is more stable and guaranteed.
2. High cutting finish, no need for secondary processing.
3. The equipment has high cutting accuracy and long service life.
4. The unique circulation exhaust system composed of double fans greatly reduces the fire rate when cutting.
5. The processing cost is low, and the subsequent maintenance is almost zero maintenance cost (excluding consumables).
It is convenient to operate and can be completed by a technician, reducing labor.

Distributed by

Signtrade

www.signtrade.com

TOLL FREE - 800 SIGNTRADE | DUBAI - U.A.E. TEL : +971 4 2681828 | Fax : +971 4 2694328 | E-mail : info@signtrade.com

UAE ★ KSA ★ QATAR ★ OMAN ★ BAHRAIN ★ KUWAIT ★ PAKISTAN ★ KENYA