



**FINISHING WHAT YOU STARTED**

# **PRODUCT CATALOGUE**

August 2023

# CWT WORKTOOLS

## FLATBED APPLICATOR AND WORKTABLE

**With our new series of flatbed applicators, we are taking steps to make our equipment even more versatile to meet the increasing demands of controlled laminating processes.**

Our goal remains the same: to build user-friendly machinery that enables your business to achieve the best possible output in terms of production and quality capacity and we have implemented many new functions for controlling pressure and speed to make that happen.

Additionally, we have invented a new way to ship semi- and fully assembled applicators in a vertical position with an optional roll-off function that makes installation fast and easy.

This solution for transportation also reduces space and will ensure a smaller environmental footprint.

Visit [cwtworktools.com](http://cwtworktools.com) to see our complete range of products.

## AREAS OF APPLICATION

- Apply premask application tape on cut vinyl
- Laminate large format prints and artwork
- Mount self-adhesive vinyl and prints to boards and panels
- For rigid and soft substrates
- Protective film on glass
- Create multi-material panels
- Car wrap preparations
- Traffic signs

**And much more with time savings of up to 85%**

# PREMIUM 1700 SERIES

## PNEUMATIC FLATBED APPLICATOR AND WORK TABLE

Our most popular and original classic model has been updated to new standards. Introducing our latest flatbed applicator, a robust production machine designed for uninterrupted long shifts.

Equipped with essential features such as a light table, electronic height adjustment, and an integrated cutting solution, it offers high production capacity and a worktable that accommodates a wide range of standard substrates and media widths available on the market.



**Tested and proven!**

Complies with CE, UL, ISO 9001 and ISO 14001.

**“Our CWT flatbed has become the centre of our production process.”**

**Frédéric Brülhart** - CEO, SICHTBAR Beschriftung



## CWT PREMIUM 1700

Model	CWT 1730 Premium	CWT 1736 Premium
Table length	3 000mm (9ft. 10in.)	3 640mm (11ft. 3in.)
Table width	1 720mm (5ft. 8in.)	1 720mm (5ft. 8in.)
Length of working area	2 560mm (8ft. 8in.)	3 200mm (10ft. 6in.)
Width of working area/roller width	1 650mm (5ft. 5in.)	1 650mm (5ft. 5in.)
Max. Thickness of substrate	70mm (0-2.7in.)	70mm (0-2.7in.)
Work height	750-900mm (2ft. 5in. - 2ft. 11in.)	750-900mm (2ft. 5in. - 2ft. 11in.)
Work height adjustment	Manual - 4 steps of 50mm (2in.)	Manual - 4 steps of 50mm (2in.)
Bed surface	Safety glass + Cutting mat	Safety glass + Cutting mat
Pressure control	Pneumatic	Pneumatic
Roll holder for glide beam	Included	Included
Roll holder for bed end	Included on one side	Included on one side
Warranty	3 Year warranty	3 Year warranty

## OPTIONS

CWT Light, illuminated table top	Option	Option
CWT Lift, electronic work height adjustment *	Option	Option
CWT Cut, long side **	Option	Option
CWT Cut, short side **	Option	Option
Silent Compressor	Option	Option
Compressor Shelf for 1700 series	Option	Option
Lower Roll Holder	Option	Option
Roll Cradle 1400, roll holder for table top	Option	Option
Roll Holder for bed end	Option	Option
Cutter Bench for 1700 series ***	Option	Option

\* CWT Lift is an factory-installed option for electronic work height adjustment, 200mm (7.8in.)

\*\* Brackets for Linear Cutter, available in two versions and are sold separately for the long side and short side.

\*\*\* A bracket that fits a wide range of cutters and slitters, such as the Ingleit InBest Pro Cutter Bar™, and KeenCut Evolution2 and Evolution3™ SmartFold.

# REGULAR 1600 AND 2100 SERIES

## PNEUMATIC FLATBED APPLICATOR AND WORK TABLE

Our most popular and original classic model has become an industry favorite among signmakers and digital printers.

It is a robust production machine built for uninterrupted long shifts, equipped with all the essential features, high production capacity, and a worktable that accommodates a wide range of standard substrates and media widths available on the market.

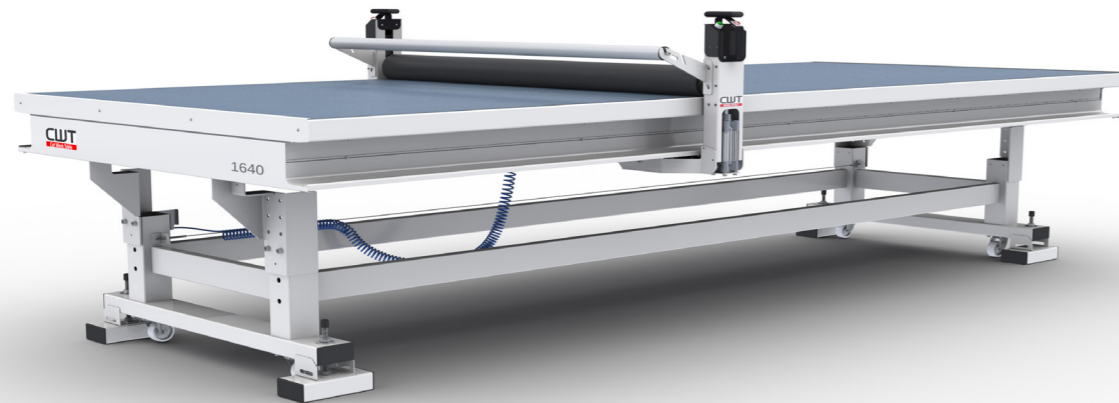


**Tested and proven!**

Complies with CE, UL, ISO 9001 and ISO 14001.

**“Makes the task faster and easier than ever.”**

**Ted Redmer** - Senior Digital Technology Manager, Alliance Franchise Brands



## CWT REGULAR 1600 AND 2100

Model	CWT 1630 Regular	CWT 1640 Regular	CWT 2147 Regular
Table length	3 000mm (9ft. 1 in.)	4 000mm (13ft. in.)	4 700mm (15ft. in.)
Table width	1 600mm (5ft. 3in.)	1 600mm (5ft. 3in.)	2 100mm (6ft. 1in.)
Length of working area	2 560mm (8ft. 5in.)	3 560mm (11ft. 8in.)	4 260mm (13ft. 12in.)
Width of working area/roller width	1 560mm (5ft. 1.5in.)	1 560mm (5ft. 1.5in.)	2 050mm (6ft. 9in.)
Max. Thickness of substrate	0-70mm (0-2.8in.)	0-70mm (0-2.8in.)	0-70mm (0-2.8in.)
Work height	744-950mm (2ft.5in. - 3ft.1in.)	744-950mm (2ft.5in. - 3ft.1in.)	744-950mm (2ft.5in. - 3ft.1in.)
Work height adjustment	Manual - 4 steps of 50mm (2in.)	Manual - 4 steps of 50mm (2in.)	Manual - 4 steps of 50mm (2in.)
Bed surface	Safety glass + Cutting mat	Safety glass + Cutting mat	Safety glass + Cutting mat
Pressure control	Pneumatic	Pneumatic	Pneumatic
Roll holder for glide beam	Included	Included	Included
Warranty	3 Year warranty	3 Year warranty	3 Year warranty

## OPTIONS

Premium Upgrade kit *	Option	Option	Option
HS Premium Lift Kit	Option	Option	Option
Silent Compressor	Option	Option	Option
Roll Cradle 1400, roll holder for table top	Option	Option	Option
Lower Roll Holder	Option	Option	Option
CWT Cut, long side **	Option	Option	Option
CWT Cut, short side **	Option	Option	Option
Cutter Bench for 1600 series ***	Option	Option	N/A

\* Premium upgrade kit includes: LED illuminated light table, Lower roll holder and Roll holder for table top.

\*\* Brackets for Linear Cutter, available in two versions and are sold separately for the long side and short side.

\*\*\* A bracket that fits a wide range of cutters and slitters, such as the Inglet InBest Pro Cutter Bar™, and KeenCut Evolution2 and Evolution3™ SmartFold.

# ADVANTAGE SERIES

## PNEUMATIC FLATBED APPLICATOR AND WORK TABLE

Our smallest applicator is still a robust production machine built for uninterrupted long shifts. It offers affordable access to flatbed technology and is compact, making it an ideal choice for smaller or narrow spaces. This machine is perfect for producing smaller signs, yard signs, posters and road signs.

It comes with an illuminated tabletop and casters as standard features, and the CWT 1016 model includes a convenient storage shelf.



**Tested and proven!**

Complies with CE, UL, ISO 9001 and ISO 14001.

*“Our CWT table is simple, smart and reliable.”*

**Kevin Spahr** - Sr. Graphics and Signage Manager,  
SignViz, a division of Paramount Safety



**CWT 1016 Advantage**



**CWT 1428 Advantage**

## CWT ADVANTAGE

Model	CWT 1016 Advantage	CWT 1428 Advantage
Table length	1 640mm (5ft. 4in.)	2 850mm (9ft. 4in.)
Table width	990mm (3ft. 3in.)	1 450mm (4ft. 9in.)
Length of working area	1 340mm (4ft. 5in.)	2 570mm (8ft. 5in.)
Width of working area/roller width	950mm (3ft. 1in.)	1 400mm (4ft. 7in.)
Max. Thickness of substrate	0-50mm (0-2in.)	0-50mm (0-2in.)
Work height	830-1 010mm (2ft. 8in. - 3ft. 4in.)	830-1 010mm (2ft. 8in. - 3ft. 4in.)
Work height adjustment	Manual	Manual
Bed surface	Safety glass + Cutting mat	Safety glass + Cutting mat
Pressure control	Pneumatic	Pneumatic
Roll holder for glide beam	Included	Included
CWT Light, illuminated table top	Included	Included
Warranty	3 Year warranty	3 Year warranty

## OPTIONS

Roll Cradle 1400, roll holder for table top	Option	Option
Silent Compressor	Option	Option
CWT Cut, long side *	Option	Option
CWT Cut, short side *	Option	Option

\* Brackets for Linear Cutter, available in two versions and are sold separately for the long side and short side.

# EVOLUTION SERIES

## FULLY ASSEMBLED PNEUMATIC FLATBED APPLICATOR AND WORK TABLE

Evolution features fully assembled flatbed applicators with pneumatic pressure control, electronic height adjustment, an illuminated table top, and integrated storage. This means it is quick and easy to install and has all popular features included.

It is a robust production machine built for uninterrupted long shifts, high production capacity, and a worktable that accommodates a wide range of standard substrates and media widths available on the market.



**Tested and proven!**

Complies with CE, UL, ISO 9001 and ISO 14001.

*“My production manager is just ecstatic with the increased efficiency of applying vinyl to various substrates.”*

**Russell Carter** - President, Signarama, Shelby Township



## CWT EVOLUTION

Model	CWT 1737 Evolution	CWT 1748 Evolution
Table length	3 645mm (11ft. 11in.)	4 810mm (15ft. 9in.)
Table width	1 745mm (5ft. 8in.)	1 745mm (5ft. 9in.)
Length of working area	3 125mm (10ft. 3in.)	4 310mm (14ft. 1in.)
Width of working area/roller width	1 650mm (5ft. 5in.)	1 650mm (5ft. 5in.)
Max. Thickness of substrate	0-95mm (0-4in.)	0-95mm (0-4in.)
Work height	800-1 085mm (2ft. 7in. - 3ft. 6in.)	800-1 085mm (2ft. 7in. - 3ft. 6in.)
Bed surface	Safety glass + Cutting mat	Safety glass + Cutting mat
Pressure control	Pneumatic	Pneumatic
Roll holder for glide beam	Included	Included
Evo Light, illuminated table top	Included	Included
Evo Lift, electric height adjustment	Included	Included
Evo Storage, integrated storage	Included	Included
Utility pack *	Included	Included
Warranty	3 Year limited warranty	3 Year limited warranty

## OPTIONS

Silent Compressor	Option	Option
Evo Cut, long side **	Option	Option
Evo Cut, short side **	Option	Option

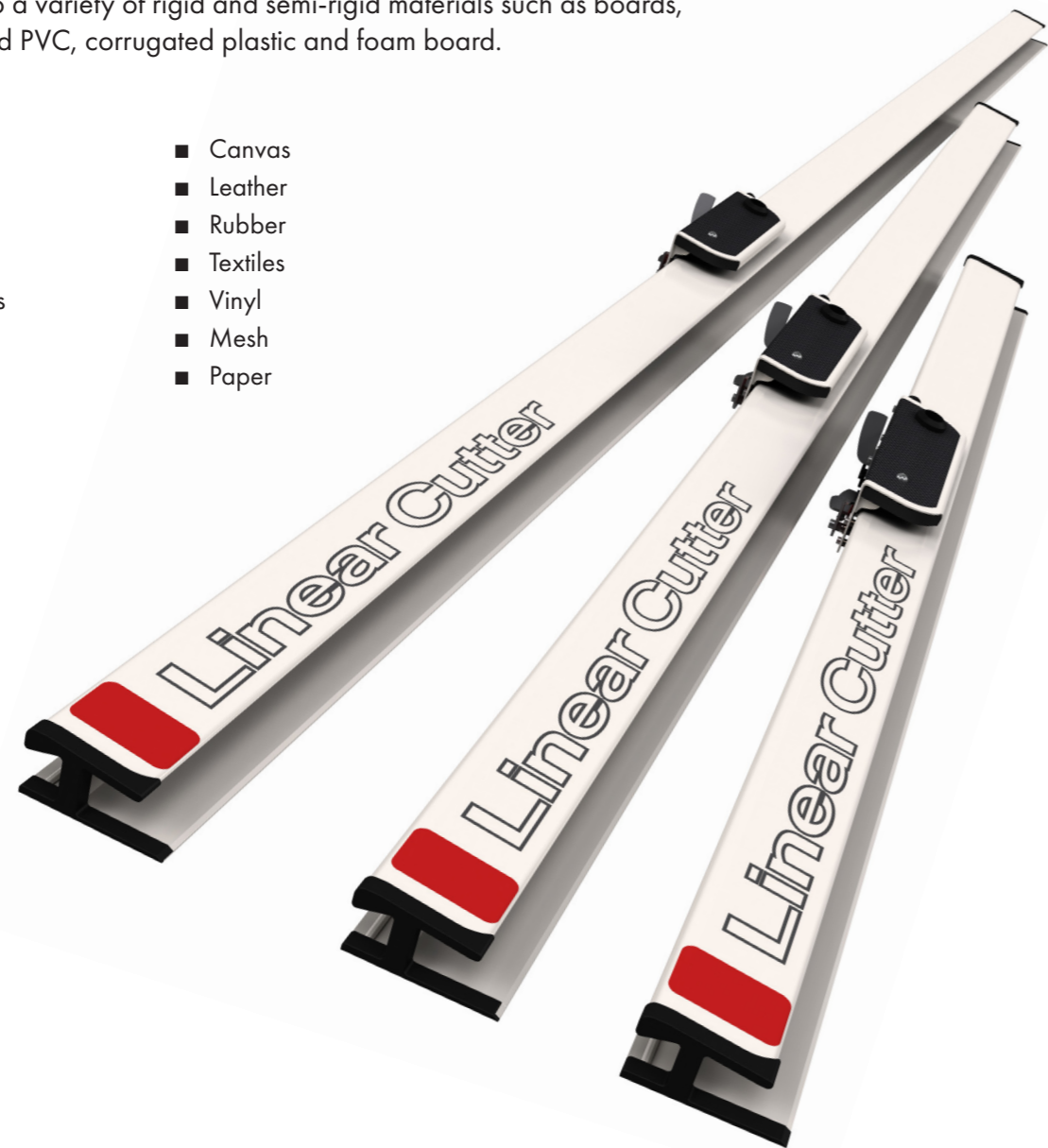
\* Roll holder for bed end, 2 x Mini roll cradles, 2 x Sliding pockets.

\*\* Brackets for Linear Cutter, available in two versions and are sold separately for the long side and short side.

# LINEAR CUTTER SERIES

Linear Cutter is perfect for trimming soft and flexible substrates such as vinyl and banners, and also a variety of rigid and semi-rigid materials such as boards, including extruded PVC, corrugated plastic and foam board.

- Flute board
- Gator board
- Cardboard
- Extruded PVC
- Magnetic sheets
- Laminates
- Banners
- Canvas
- Leather
- Rubber
- Textiles
- Vinyl
- Mesh
- Paper



## CWT Linear Cutter

Model	D100	Y170	B250	R330
Cut length	1 000mm (3ft. 3in.)	1 700mm (5ft. 7in.)	2 500mm (8ft. 2in.)	3 300mm (10ft. 9in.)
Warranty	1 Year warranty	1 Year warranty	1 Year warranty	1 Year warranty

### Linear Cutter Set\*

Spare blades "Straight", standard blade, 10 pcs

Spare blades "Hook", 10 pcs

Spare blades "Concave", 10 pcs

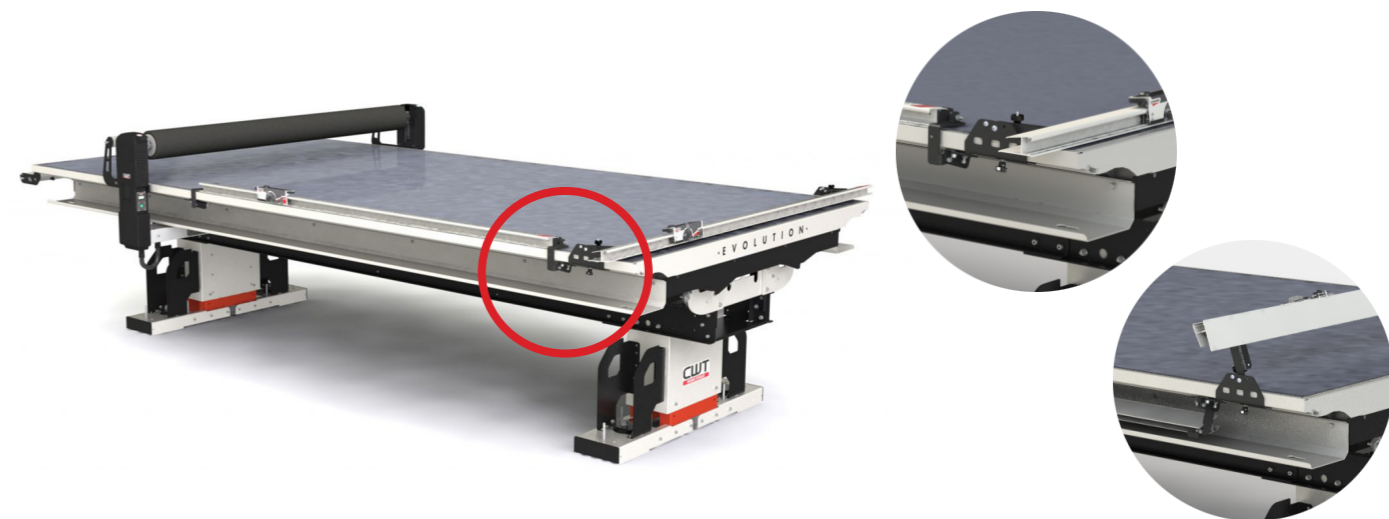
\* Includes D100, Y170, B250, R330, 1 x Cutter Head and 1 x Extension stick.

## BRACKETS FOR CWT WORKTABLE INTEGRATION

Convenient and fast connection brackets are available for our trimmer CWT Linear Cutter.

Our range of Linear Cutters can be integrated into the short and long sides of both the Premium, Regular and Evolution series using our optional CWT Cut and EVO Cut brackets for Linear Cutter.

Model	Long side	Short side
EVO Cut, Brackets for Evolution series	Option	Option
CWT Cut, Brackets for Adv./Reg./Prem. series	Option	Option



# OPTIONAL ACCESSORIES



## COMPRESSOR

Silent and oil-free stand-alone compressor.

Silent Compressor

Compressor Shelf for 1700 series

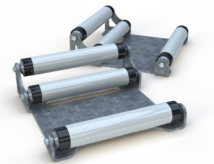


## LONG REACH CUTTER

Easy-to-use trimming tool with a telescopic extension stick.

Long Reach Cutter

Blades for Long Reach Cutter, 10 pcs



## ROLL CRADLE

Media holder for the table top, use for easy unwinding of media.

Mini Roll Cradle, set of 2 pcs      Width 100mm (4in.)

Roll Cradle 1400, 1 pcs      Width 1400mm (55in.)



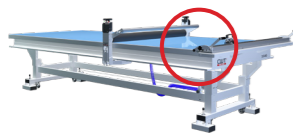
## STICKY CLEANER

Cleaning roller and cleaning pads for a dust-free surface.

Sticky Cleaner 254      Width 254mm (10in.)

Sticky Cleaner 360      Width 360mm (14in.)

Sticky pads      50 sheets



## CUTTER BENCH

A bracket that fits a wide range of cutters and slitters, such as the Inglet InBest Pro Cutter Bar™, and KeenCut Evolution2 and Evolution3™ SmartFold.

Cutter Bench for Regular 1600 series

Cutter Bench for Premium 1700 series



# CUTTING MATS SELF HEALING

Original cutting mats from CWT Worktools are tested and proven for guaranteed performance. They can be used on any worktable or flatbed applicator and are available in many standard as well as custom-made sizes. Most importantly, our cutting mats do not contain any harmful softeners (non-phthalate), making them safe to use.

Remember to replace the cutting mat when necessary, as a worn mat may affect lamination quality.



## CWT ORIGINAL CUTTING MATS

Model	Size
CWT1016 Advantage	985x1770 mm, ±5mm
CWT1428 Advantage	1445x2880 mm, ±5mm
CWT1630 Regular	1570x3030 mm, ±5mm
CWT1640 Regular	1570x4040 mm, ±5mm
CWT1647 Regular	1570x4770 mm, ±5mm
CWT1840 Regular	1770x4040 mm, ±5mm
CWT1847 Regular	1770x4770 mm, ±5mm
CWT2140 Regular	2090x4040 mm, ±5mm
CWT2147 Regular	2090x4770 mm, ±5mm
CWT1736 Platinum	1670x3690 mm, ±5mm
CWT1730 Evolution	1720x3170 mm, ±5mm
CWT1737 Evolution	1720x3750 mm, ±5mm
CWT1748 Evolution	1720x4950 mm, ±5mm
CWT1730 Premium	1695 x 3030 mm, ±5mm
CWT1736 Premium	1695 x 3630 mm, ±5mm

Cutting mats are available in various custom sizes. Please contact us for a quotation.



## **Contact**

### **CWT Worktools**

Årstidsvägen 8

SE-665 35 Kil

Sweden

**CWTWORKTOOLS.COM**

