

An abundance of textile inks to choose from. Textile pigment ink and sublimation dye ink can be loaded at the same time

Depending on the type of application and fabric, 5 different type of inks can be choose from*1. It is now possible to choose textile pigment ink (TP400) and sublimation dye ink (Sb420) at the same time*2, making possible to print with only one machine on cotton, hemp, polyester and similar textile.

Ink type	Product name	Color	Features	Applicable fabric
Sublimation dye ink	Sb420	Bl, M, Y, K, Lbl, Lm	Sublimation ink for direct printing. No transfer paper is required.	Polyester
Disperse dye ink	Dd400	C, M, Y, K, R, Gray, Violet, Pink	Inks are fixed by heating and have high durability.	Polyester, nylon, acetate, and other fibers
Textile pigment ink	TP400 *3	C, M, Y, K (Bl, R, Lk)	Simple post-printing process. No steaming, washing and drying processes are required. Inks are fixed by only heating. *4	Cotton, hemp, and other fibers
Reactive dye ink	Rc400	C, M, Y, K, Bl, R, Or, Lk	Inks produce vibrant colors, reproduce a wide gamut of colors, and have water resistance, light-fastness, and rub-fastness because of dyestuff molecule bonding with the fibers.	Cotton, hemp, silk, rayon, and other fibers
Acid dye ink	Ac400	C, M, Y, K, Bl, R, Or, Lk	Inks produce vivid and brilliant colors on animal fibers and synthetic protein fibers such as nylon.	Wool, leather, silk, nylon, and other fabrics

*1 Please select an ink type depending on your intended use. The ink type cannot be changed after installation. With the hybrid function two types of inks (textile pigment and sublimation dye ink) can be loaded.

*2 Available from June 2017. Each textile pigment ink (TP400) and sublimation dye ink (Sb420) has 4 colors (C,M,Y,K)

*3 TP 400 (textile pigment ink) 7 color available at a later time. *4 Depending on the type of printing, steaming and washing may be needed.

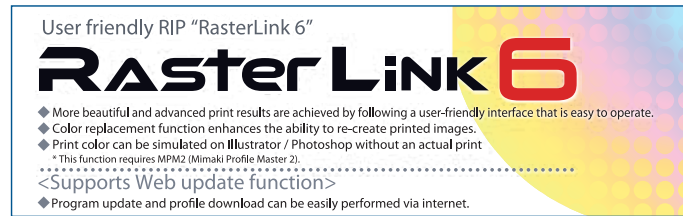
Software

TxLink3 Lite or RasterLink6 is bundled according to user's request.



Professional software RIP for multi color separation
Software RIP for Multi Color Separation
TxLink3

- Spot color can be assigned to each color on separation plates.
- ICC profile creation from CMYK + spot colors.
- Color replacement on raster data
- A variety of paneling functions, including step-and-repeat layout, which are useful for textile designing.



User friendly RIP "RasterLink 6"
RasterLink6

- More beautiful and advanced print results are achieved by following a user-friendly interface that is easy to operate.
- Color replacement function enhances the ability to re-create printed images.
- Print color can be simulated on Illustrator / Photoshop without an actual print. * This function requires MPM2 (Mimaki Profile Master 2).
- <Supports Web update function>
- Program update and profile download can be easily performed via internet.

Specifications

Item	Tx300P-1800B
Printhead	On-demand piezo inkjet technology (4 line printhead)
Print resolution	360 dpi, 540 dpi, 720 dpi, 1080 dpi, 1440 dpi
Maximum print width	1,880 mm (74 in)
Maximum media width	1,900 mm (74.8 in)
Ink	Type / Color
	Sublimation dye ink: Sb420 (Bl, M, Y, K, Lbl, Lm) Disperse dye ink: Dd400 (C, M, Y, K, R, Gray, Violet, Pink) Textile pigment ink: TP400 (C, M, Y, K, Bl, R, Lk)* Reactive dye ink: Rc400 (C, M, Y, K, Bl, R, Or, Lk) Acid dye ink: Ac400 (C, M, Y, K, Bl, R, Or, Lk)*
Package size	2L ink pack
Media thickness	1.0 mm or less
Roll media weight	40 kg (88 lb) or less Please note that the above maximum weight applies on a printed roll including ink weight.
Roll media diameter	φ 250 mm or less
Certifications	VCCI class A, FCC class A, ETL UL 60950-1 CE Marking (EMC, Low voltage, Machinery directive, and RoHS, CB, REACH, Energy Star, and RCM)
Interface	Data output: USB 2.0 Hi-speed / Ethernet 1000BASE-T E-mail output: Ethernet 10BASE-T / 100BASE-TX / 1000BASE-T
Power supply	Single-phase AC100V 120V / AC200~240V ±10% 50 / 60 Hz ±1Hz
Power consumption	AC100V: 1.44 kW / AC200V: 1.92 kW
Operational environment	Temperature: 20-30 °C (68-86 °F) Humidity: 35-65% Rh (Non condensing)
Dimensions (W × D × H)	3,183 mm × 1,912 mm × 1,844 mm
Weight	627 kg (1382.2 lb)

* TP400 (Textile Pigment dye ink) 7 color, Ac400 (Acid dye ink) available at a later date.

Options

Item	Product number	Note
Small relay box	OPT-J0370	Interlock controller between a main unit and an external heater
Relay Box2	OPT-J0407	
Slip sheet holder unit	OPT-J0405	Holder unit using for prevention of ink set off

• Some of the samples in this folder are artificial renderings • Specifications, design and dimensions stated in this folder may be subject to change without notice (for technical improvements, etc.)
• The corporate and merchandise names written on this folder are the trademark of the respective corporations • Inkjet printers print using extreme fine dots, so colours may vary after replacement of the printing heads, also note that if using multiple printer units, colours could vary slightly from one unit to other unit due to slight individual differences • Composer's errors reserved

For
TEXTILES &
APPAREL

Entry-Model, Belt-Type Direct-to-Textile Inkjet Printer **Mimaki™**
Tx300P-1800B



Next is
To THE Ultimate ON-Demand production



Supplies

Item	Product number	Note	
Sublimation dye ink Sb420	Blue I-SB420-BLD-2L-1	2L ink pack	
	Magenta I-SB420-MD-2L-1	"ECO PASSPORT" Acquired Certification (Certificat#No. NEP1606)	
	Yellow I-SB420-YD-2L-1		
	Black I-SB420-KD-2L-1		
	Light blue I-SB420-LBD-2L-1		
Disperse dye ink Dd400	Light Magenta I-SB420-LMD-2L-1		
	Cyan I-DD400-C-2L-1	2L ink pack	
	Magenta I-DD400-M-2L-1		
	Yellow I-DD400-Y-2L-1		
	Black I-DD400-K-2L-1		
	Red I-DD400-R-2L-1		
	Violet I-DD400-V-2L-1		
Textile pigment ink TP400	Pink I-DD400-P-2L-1		
	Grey I-DD400-G-2L-1		
	Cyan I-TP400-C-2L-1	2L ink pack	
	Magenta I-TP400-M-2L-1		
	Yellow I-TP400-Y-2L-1		
	Black I-TP400-K-2L-1		
	Reactive dye ink Rc400	Light black I-RC400-LK-2L-1	2L ink pack
		Cyan I-RC400-C-2L-1	
		Magenta I-RC400-M-2L-1	
		Yellow I-RC400-Y-2L-1	
Black I-RC400-K-2L-1			
Acid dye ink Ac400	Light black I-RC400-LK-2L-1		
	Red I-RC400-R-2L-1		
	Blue I-RC400-BL-2L-1		
	Orange I-RC400-OR-2L-1		
	Cyan I-AC400-C-2L-1	2L ink pack	
	Magenta I-AC400-M-2L-1		
	Yellow I-AC400-Y-2L-1		
Flushing liquid 03	Black I-AC400-K-2L-1		
	Light black I-AC400-LK-2L-1		
	Red I-AC400-R-2L-1		
	Blue I-AC400-BL-2L-1		
	Orange I-AC400-OR-2L-1		
Flushing liquid 03	C-FL003-Z-22-1-KA	Flushing liquid for head cleaning 220 ml cartridge	
Flushing liquid 03	C-FL003-Z-2L-1-SA	Flushing liquid for ink replacement	
Flushing liquid 12	FL012-Z-22-1	Dedicated flushing liquid for TP400 ink 220 ml cartridge	



Distributed by
Signtrade
www.signtrade.com

TOLL FREE - 800 SIGNTRADE | DUBAI - U.A.E. TEL : +971 4 2681828 | Fax : +971 4 2694328 | E-mail : info@signtrade.com
UAE * KSA * QATAR * OMAN * SAUDI ARABIA * KUWAIT * PAKISTAN * KENYA

Direct-to-Textile Inkjet Printer makes possible printing on *sheer fabric* and *stretchy materials*



Tx300P-1800B

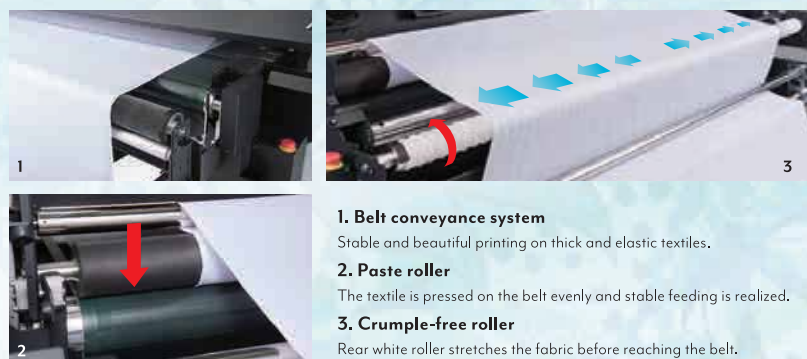
This 1.8-meter-wide printer is specifically designed to address the need in textile and apparel industries for printing on sheer fabric and stretchy materials such as knits. The entry model, which does not require a screen print, is a powerful product for small-scale and various on-demand customer's needs.



Belt convey mechanism ensures stable textile transportation

As the textile is fixed on the belt and transported without pulling, stable and high-quality printing is now possible on sheer and thin textile. Its unique design makes it suitable for printing on a wide variety of textile, including raised fibers and stretchy materials such as knits.

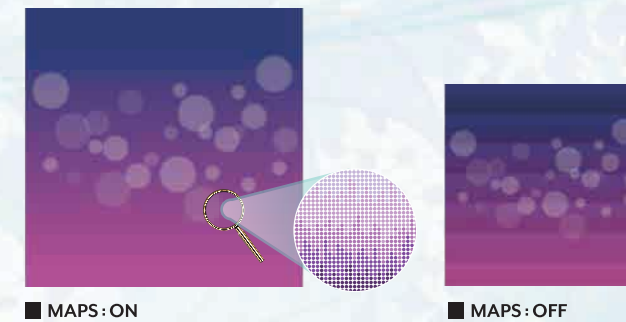
Crumpled and bending of textile is reduced as the printer is equipped with a "crumple-free roller" and a "paste roller" on the belt conveyance system, resulting in beautiful and stable results.



- 1. Belt conveyance system**
Stable and beautiful printing on thick and elastic textiles.
- 2. Paste roller**
The textile is pressed on the belt evenly and stable feeding is realized.
- 3. Crumple-free roller**
Rear white roller stretches the fabric before reaching the belt.

Mimaki's print technologies

Mimaki Advanced Pass System 4 (MAPS4) reduces banding. Banding and uneven color printing are reduced by scattering swath boundaries.



Superior inkjet technology

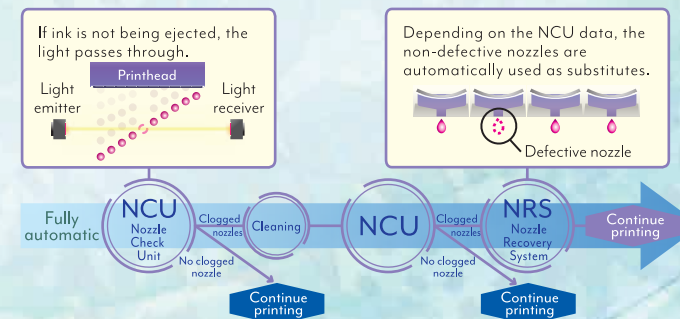
Mimaki's superior inkjet technology accurately places the ink droplets without losing their perfect circularity. This ensures that texts, lines, and edges are clearly and sharply printed.



Uninterrupted printing solution

Continuous operation support pack minimizes the downtime

The Nozzle Check Unit (NCU) detects nonfunctioning nozzles and automatically cleans them. If the nozzles fail to operate after cleaning, defective nozzles are replaced by non-defective ones until a technician arrives, and printing is continued. This feature enables uninterrupted print operations and continuous productivity.



Standard features of MBIS3 and UISS deliver continuous printing for a long time.

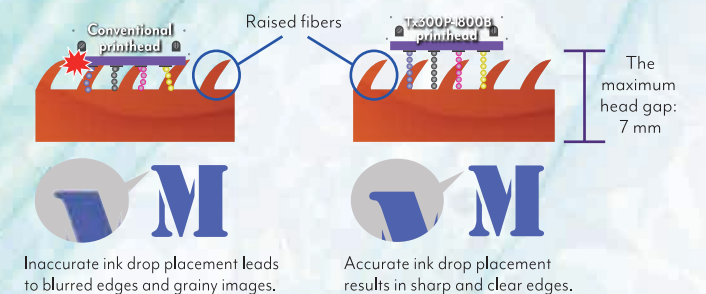
Large two liter ink packs are installed in MBIS3¹ for long-time continuous printing to reduce operating cost. As soon as one ink container is empty, UISS² automatically provides ink from another container without any interruption to printing. Continuously supply ink system ensures unattended continuous printing.

*1 MBIS3: Mimaki Bulk Ink System3
*2 UISS: Uninterrupted Ink Supply System



Printhead allows printing on various types of textile

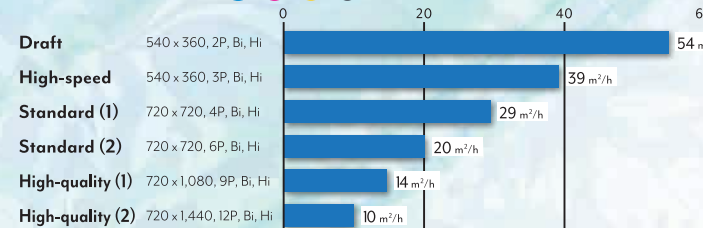
While printing on raised fiber surface textiles, a high head gap setting is required to prevent contact between the printhead and the nap. In conventional models, such gap conditions reduce the accuracy of ink droplet placement. However, the printhead ejects ink droplets at a high speed to maintain the straightness of the droplet direction, and accordingly accurate ink droplet placement is achieved. This enables high-quality printing on napped textiles.



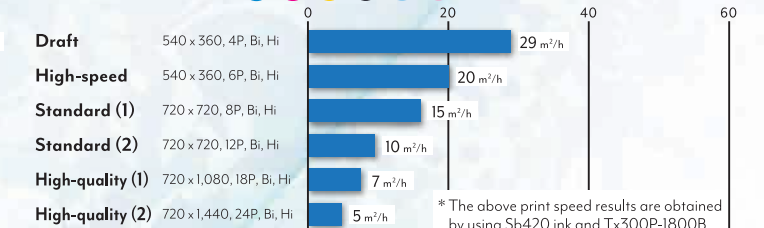
Printing at speed of up to 50 square meters per hour

Adjustable speed from draft mode to high-quality, depending on customer's needs

4 color ink set (Bl, M, Y, Bk)



6 color ink set (Bl, M, Y, Bk, Lbl, Lm)



* The above print speed results are obtained by using Sb420 ink and Tx300P-1800B.