

# Sophisticated RIP software maximizes the performance of SWJ-320EA

## Raster Link 6

### Additional useful functions

#### User friendly RIP key features

- Easy to follow icons enable intuitive and user-friendly operation
- Related settings feature in one window to simplify RIP operations, with 'Register as Favourite' option available for regularly used layouts
- Printing progress can be monitored on the main screen

#### 1. Three ink layers in one pass print function

A three-layer print of colour, white and colour can be performed at one time. Printing a base layer 'underlay' of white ink allows perfect reproduction of beautiful natural colours when printing on transparent media. Window graphics can be printed with high precision and no multi-pass colour registration shift.

#### 2. Layout function

Three ink layers or copied images are freely laid out if print conditions remain the same. This function reduces the media waste by efficient layout.

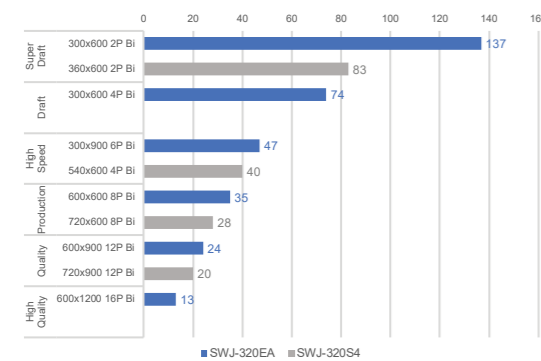
#### 3. Multi-profile, simultaneous printing function

Several profiles that match conditions can be simultaneously printed. This is particularly useful for test output when the profile for a target image quality or colour requires multiple 'profile' test prints.

*\*To be supported by RasterLink6 program update.*

#### Specifications

Item	Specification	Specifications
Print head	Specification	4 Drop-on-demand piezoelectric print heads: 2-layered staggered arrangement in 2-line
Drawing mode		Y: 300, 600, 900 dpi; X: 600; 900, 1200 dpi
Usable inks		CS100 ink (M,C,Y,K)
Ink supply		Supplying 2L bottle
Capacity of ink tank		3L-bottle x 1 for each color
Max. printing width		3200mm (126.0 in)
Roll Media size	Maximum	3250mm (1524 mm each when twin rolls are set. 1620 mm when roll holders are used)
	Minimum	210mm (8.3in)
	Thickness	1mm (0.04in) or less
	Roll outside diameter	When using take-up unit and feeding unit:Φ250mm (Φ9.8in) or less
	Roll weight	When using feeding unit:100kg (220.5lb) or less When using roll holder:18kg (39.7lb) or less
Roll Media size	Roll inside diameter	When using take-up unit and feeding unit:3 inches When using roll holder:2 or 3 inches
Distance accuracy	Reproducibility	Whichever the larger one of ± 1.5 mm (0.06in) or ± 0.3 % of the designated
Perpendicularity		± 0.5 mm (0.02in) / 1000 mm (39.4in)
Media skew		5 mm (0.2in) or less / 10 m (393.7in) variable
Head height adjustment		1.7, 1.9, 2.6, 3.3 mm (0.070,0.074, 0.10, 0.13in)
Interface		USB 2.0, Ethernet
Command		MRL V
Noise	during standby	Less than 58 dB (FAST-A, Front & Rear & Left & Right 1 m)
	during continuous printing	Less than 65 dB
	during discontinuous printing	Less than 70 dB
Power		AC200 - 240 ± 10%, 50/60Hz ± 1Hz, 15A or less
Power consumption		6.9KW or less
Dimensions(W x D x H)		5,410x995x1,440
Weight		850kg
Safety standard		VCCI Class A / FCC Class A / Compliant with UL 60950-1, ETL / CE Marking (EMC, Low voltage, Machinery directive) / CB Report / REACH / EAC



• Some of the samples in this folder are artificial renderings • Specifications, design and dimensions stated in this folder may be subject to change without notice (for technical improvements, etc.)  
 • The corporate and merchandise names written on this folder are the trademark of the respective corporations • Inkjet printers print using extreme fine dots, so colours may vary after replacement of the printing heads, also note that if using multiple printer units, colours could vary slightly from one unit to other unit due to slight individual differences • Composer's errors reserved

# SWJ-320EA

## Twin-roll printing as an optional feature on the SWJ-320EA



1 YEAR FULL WARRANTY INCL. PRINT HEADS WHEN USING ORIGINAL INK

MAPS4 → QUALITY PRINTING EVEN ON HIGH SPEED

NOZZLE RECOVERY SYSTEM

TWIN ROLL PRINTING

RASTERLINK 6PLUS

ALL MIMAKI FEATURES

## AFFORDABLE 3,2M HIGH SPEED SOLVENT PRINTER ...

Distributed by  
**Signtrade**  
 www.signtrade.com

TOLL FREE - 800 SIGNTRADE | DUBAI - U.A.E. TEL : +971 4 2681828 | Fax : +971 4 2694328 | E-mail : info@signtrade.com  
 UAE ★ KSA ★ QATAR ★ OMAN ★ BAHRAIN ★ KUWAIT ★ PAKISTAN ★ KENYA



SIGN & GRAPHICS

**Mimaki**

The world imagines... Mimaki delivers