

## Sophisticated RIP software maximizes the performance of SIJ-320UV

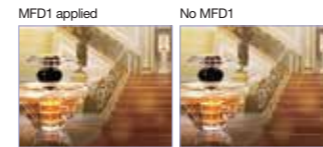
User friendly RIP "RasterLink 6" comes as standard

### RasterLink 6

- ◆ More beautiful and advanced print results are achieved by following a user-friendly interface that is easy to operate.
- ◆ Colour replacement function enhances the ability to re-create printed images.
- ◆ Print colour can be simulated on Illustrator / Photoshop without an actual print.
- \*This function requires MPM2 (Mimaki Profile Master 2).
- ◆ Program update and profile download can be easily performed via internet.

### New image-processing technique reduces tone jumps and uneven colour printing

Mimaki Fine Diffusion 1 (MFD1) has been recently added to the bundled RasterLink6 RIP software. MFD1 reduces the noise that is generated in image data during image processing and enables the production of better print results without tone jumps or uneven colours.



# SIJ-320UV

### Specifications

Item	SIJ-320UV	
Head	On-demand piezo head (4 staggered printheads)	
Print resolution	300dpi, 600dpi, and 900dpi	
Ink droplet size	Minimum: 7pl Maximum: 36pl	
Head gap (Manual adjustment)	1.7mm / 1.9mm / 2.6mm / 3.3mm (Distance between the platen and the print head)	
Ink	Type	LED-UV ink LUS-120
	Colour	C, M, Y, K
	Packaging	1 litre ink bottle, Ink can be filled up to 3 litres per ink colour.
Maximum print width	3,200mm	
Maximum media width	3,250mm (Twin rolls printing with a small drive shaft: 1,524mm x 2)	
Minimum media width	210mm	
Media thickness	1.0mm or less	
Roll outer diameter	Large drive shafts: Φ250mm or less. Small drive shaft with roll holders: Φ180mm or less.	
Roll weight	Large drive shafts: 100kg or less. Small drive shaft with roll holders: 25kg or less	
Dimensions (W x D x H)	5,410mm x 995mm x 1,440mm	
Shipping dimensions (W x D x H)	5,750mm x 1,140mm x 1,210mm	
Weight	850kg	
Power supply	AC 200 – 240V ± 10% 50/60 Hz ± 1 Hz, 15 A or less	
Power consumption	3.6kW or less	
Operational environment	Temperature	20 – 30 °C (68 – 86 °F)
	Humidity	35 – 65%Rh (No condensing)
	Temperature accuracy	20 – 25 °C (68 – 77 °F)
	Temperature gradient	Less than ± 10 °C/h (± 18 °F/h)
	Dust	0.15mg/m <sup>3</sup> (Equivalent to normal office level)

### Supplies

Item	Colour	Item No.	Remarks
LED-UV Ink LUS-120	Cyan	LU12-C-BA	1L ink bottle
	Magenta	LU12-M-BA	
	Yellow	LU12-Y-BA	
	Black	LU12-B-BA	

• Some of the samples in this folder are artificial renderings • Specifications, design and dimensions stated in this folder may be subject to change without notice (for technical improvements, etc.)  
• The corporate and merchandise names written on this folder are the trademark of the respective corporations • Inkjet printers print using extreme fine dots, so colours may vary after replacement of the printing heads, also note that if using multiple printer units, colours could vary slightly from one unit to other unit due to slight individual differences • Composer's errors reserved



## Affordable grand format LED UV printer ...

Distributed by  
**Signtrade**  
www.signtrade.com

TOLL FREE - 800 SIGNTRADE | DUBAI - U.A.E. TEL : +971 4 2681828 | Fax : +971 4 2694328 | E-mail : info@signtrade.com  
UAE ★ KSA ★ QATAR ★ OMAN ★ BAHRAIN ★ KUWAIT ★ PAKISTAN ★ KENYA



**Mimaki**  
The world imagines... Mimaki delivers



# High performance grand format LED UV inkjet printer

The all new Mimaki SIJ-320UV grand format LED UV inkjet printer delivers a unique combination of high quality super wide output for volume production of banners, retail and exhibition graphics and other similar applications up to 3.2m wide, with the added versatility of twin-roll simultaneous printing.

## ENGINEERING EXCELLENCE AND CREATIVE INNOVATION

Founded in Japan in 1975, Mimaki Engineering has steadily grown by reputation and influence into a global company with large operational bases in Asia and the Pacific, United States and Europe.

Renowned for award-winning performance, peerless build quality and innovative technology, Mimaki has established itself as a leading manufacturer of wide-format inkjet printers and cutting machines for the sign and graphics, textile and apparel and industrial markets. In addition, Mimaki also provides a comprehensive range of supporting products; hardware, software and associated consumable items, such as inks and cutting blades.

From outdoor signage and billboards to interior decoration and furnishing, from packaging and labels to promotional gifts and apparel, Mimaki is committed to developing technology that sets new industry standards, producing machines and products that turn the imagination of our customers into breath-taking reality.

... Mimaki delivers

## SIJ-320UV delivers ...

- Super wide format printing (up to 3.2m)
- High speed printing up to 110m<sup>2</sup>/h
- Newly developed LUS-120 high performance UV curing ink
- High density print mode for front/backlit applications
- MAPS, MFD, NCU & NRS for optimal print quality & performance
- Media roll weights up to 100kg
- Simultaneous twin-roll print facility

**NEW LUS-120 LED UV 4-COLOUR INKSET**

- 110m<sup>2</sup>/h MAX. PRINT SPEED
- 900DPI MAX. RESOLUTION
- 3,200mm MAX. PRINT WIDTH
- RASTERLINK 6 RIP SOFTWARE
- ADVANCED MEDIA FEED FUNCTION

the power to

create...

SIJ-320UV

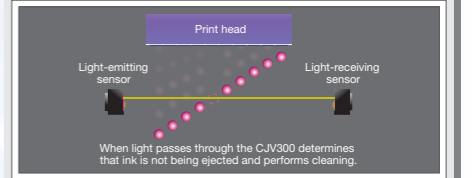
### Efficient and Versatile Twin-Roll Simultaneous Printing

Taking advantage of the 3,200mm printing width, two media rolls can be mounted for simultaneous printing. Different print jobs (or the same print job) can be printed on two separate rolls. The user can select the preferred width separately for each roll, within a specified range (210 to 1,524mm).

### Prevention, print quality problems - NCU\*

The SIJ-320UV is equipped with Mimaki's original automatic NCU. Clogged nozzles are automatically detected and cleaned by the NCU. If the clogging is not resolved by cleaning, the SIJ-320UV automatically sets the nozzle recovery function NRS and resumes printing. These functions significantly reduce the waste printing caused by clogged nozzles during a continuous printing run.

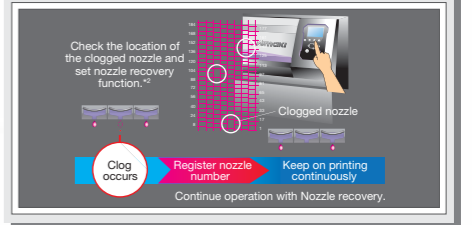
\* NCU: Nozzle Check Unit



### Productivity maintenance - NRS<sup>1</sup>

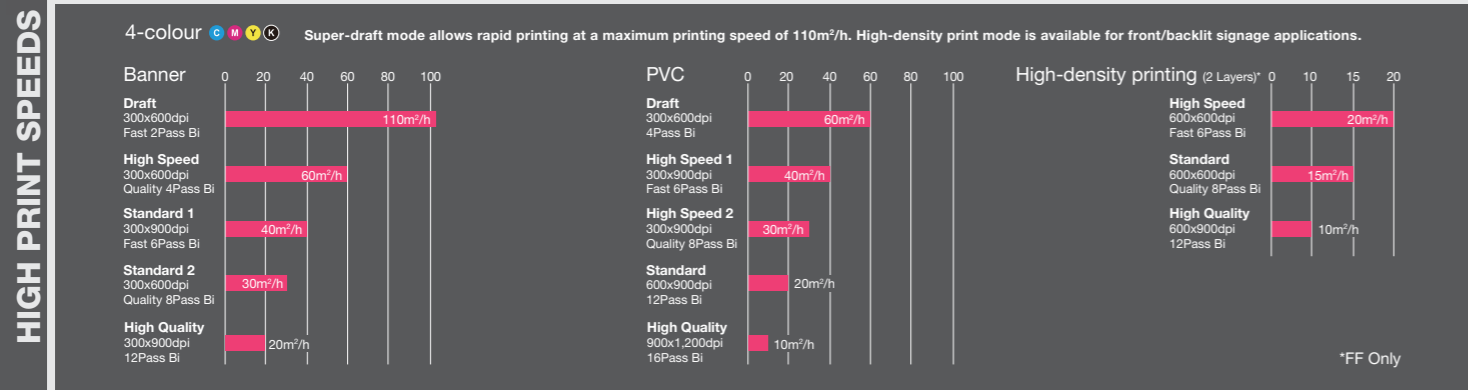
The NRS substitutes defective nozzles with non-defective nozzles until the technician arrives. This feature enables uninterrupted print operations and continuous productivity.

<sup>1</sup> NRS: Nozzle Recovery System <sup>2</sup> 10 nozzles per nozzle row can be registered.



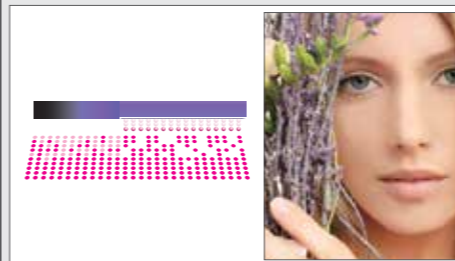
**Create ...** Indoor and Outdoor Signage, Exhibition and Display Graphics, Front and Backlit Signage, Retail PoS and much more...

## KEY TECHNICAL FEATURES ...



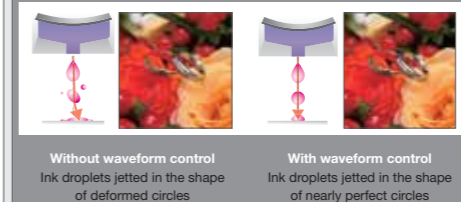
## BEAUTIFUL OUTPUT

**MAPS4 (Mimaki Advanced Pass System 4)**  
Reduces banding by dispersing ink drops between passes.



## Waveform Control Technology

Ensures high quality print resolution, by jetting ink drops in straight lines with almost perfect round dots, delivering clear and sharp letters, lines and edges.



## Superior inkjet technology

Delivers high density print by removing the gap between dots.

