

# RasterLink 6

## Sophisticated RIP Software maximizes performance

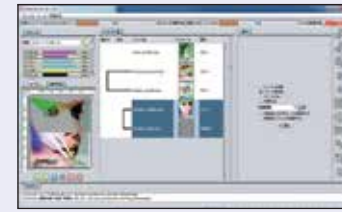
Intuitive and user-friendly operation



1. Easy to follow icons enable intuitive and user-friendly operation



2. Related settings feature in one window to simplify RIP operations with 'Register as Favourite' option available for regularly used layouts



3. Printing progress can be monitored on the main screen

**3-layer printing**  
Enables simultaneous 3-layer printing:  
e.g. Colour → White → Colour

**Web update function is supported:**  
This facility enables easy program updates and profile downloading to be performed via the internet.

### Specifications

	JV300-130	JV300-160
Print head	On-demand piezo head (staggered dual-head)	
Resolution	360 dpi, 540 dpi, 720 dpi, 1440 dpi	
Drop size	Min. 4pl, Max.35pl	
Head height	2.0mm/2.5mm/3.0mm (+1.0mm or +2.0mm) * manual adjustment	
Ink type	Solvent ink: SS21/BS3/ES3 (to be available separately) Water-based sublimation ink: Sb53 (*BS3 ink is only available to non-EU countries)	
Ink colour	SS21: 9-colour (CMYKcLmLkOrW), BS3(CMYK), ES3(TBD) Sb53 (BL, M, Y, K, DK, LBL, Lm)	
Ink capacity	SS21:440ml cartridge/2L ink pack (W:220ml cartridge only) BS3:600ml ink pack ES3:440ml cartridge (W:220ml, cartridge only) Sb53: 440ml cartridge/2L ink pack	
Max. printing width	Max.1,361mm	Max.1,610mm
Max. media width	Max.1,371mm	Max.1,620mm
Media thickness	1.0mm or less	
Roll weight	40kg or less	
Outside dimension	2,541mm(W) x 707mm(D) x 1,392mm(H)	2,793mm(W) x 707mm(D) x 1,392mm(H)
Packing size	2,666mm(W)x750mm(D)x1,050mm(H)	2,916mm(W) x 750mm(D) x 1,050mm(H)
Body weight	170.6kg	182.4kg
Power supply	2x Single phase (AC100-120V/220-240V +/-10%) 50/60Hz±1Hz	
Power consumption	1,440W×2 or less (100V) / 1,920W×2 or less (200V)	
Applicable standards	VCCI class A / FCC class A / CE Marking (EMC, Low Voltage and Machinery) / CB report / UL60950-1ETL / RoHS / REACH / CCC (pending) / Energy Star / RCM	
Operational environment	Temperature: 20-30 °C (68-86 °F) Humidity: 35-65% Rh (Non condensing)	

### Supplies

Item	Colour		
SS21	Cyan	SPC-0501C	440ml Ink cartridge
	Magenta	SPC-0501M	
	Yellow	SPC-0501Y	
	Black	SPC-0501K	
	Light Cyan	SPC-0501LC	
	Light Magenta	SPC-0501LM	
	Orange	SPC-0501Or	
	Light Black	SPC-0501Lk	
	White	SPC-0504W-2	
Sb53	Cyan	SPC-0588C	2,000ml Ink pack
	Magenta	SPC-0588M	
	Yellow	SPC-0588Y	
	Black	SPC-0588K	
	Light Cyan	SPC-0588LC	
	Light Magenta	SPC-0588LM	
	Orange	SPC-0588Or	
	Light Black	SPC-0588Lk	
	Blue	SB53-BL-44	
Magenta	SB53-M-44		
Yellow	SB53-Y-44		
Black	SB53-K-44		
Deep Black	SB53-DK-44		
Light Blue	SB53-LBL-44		
Light Magenta	SB53-LM-44		
Blue	SB53-BL-2L	2,000ml Ink pack	
Magenta	SB53-M-2L		
Yellow	SB53-Y-2L		
Black	SB53-K-2L		
Deep Black	SB53-DK-2L		
Light Blue	SB53-LBL-2L		
Light Magenta	SB53-LM-2L		

### 4 different ink set options available:

- 4 x Ink Set Options**
- C M Y K**  
4-colour (high speed printing)
  - C M Y K Lc Lm Lk Or**  
8-colour (smooth, vibrant colours)
  - C M Y K Lc Lm W W**  
6-colour + White/White (high density white printing)
  - B M Y Dk Lb Lm**  
6-colour (dye sub printing)
- SS21
- Sb53

JV300 provides even greater versatility and productivity with 4 different ink set options, including solvent and dye sub inks.

\* Some of the samples in this folder are artificial renderings • Specifications, design and dimensions stated in this folder may be subject to change without notice (for technical improvements, etc.)  
• The corporate and merchandise names written on this folder are the trademark of the respective corporations • Inkjet printers print using extreme fine dots, so colours may vary after replacement of the printing heads, also note that if using multiple printer units, colours could vary slightly from one unit to other unit due to slight individual differences • Composer's errors reserved

# JV300 Series



Versatile, high-quality production printer...

Distributed by  
**Signtrade**  
www.signtrade.com

TOLL FREE - 800 SIGNTRADE | DUBAI - U.A.E. TEL : +971 4 2681828 | Fax : +971 4 2694328 | E-mail : info@signtrade.com  
UAE \* KSA \* QATAR \* OMAN \* BAHRAIN \* KUWAIT \* PAKISTAN \* KENYA



SIGN & GRAPHICS



TEXTILE & APPAREL

# Mimaki

The world imagines... Mimaki delivers





## Next-generation printer with beautiful output and high productivity

Mimaki's latest high performance JV300 Series sets a new bench mark for professional wide format printers. With the unrivalled versatility of multiple ink types, the JV300 delivers stunning photo-quality prints at class-leading speeds and provides the ultimate wide format solution for sign & graphics professionals, sportswear and fashion manufacturers, print shops and more.

### ENGINEERING EXCELLENCE AND CREATIVE INNOVATION

Founded in Japan in 1975, Mimaki Engineering has steadily grown by reputation and influence into a global company with large operational bases in Asia and the Pacific, United States and Europe.

Renowned for award-winning performance, peerless build quality and innovative technology, Mimaki has established itself as a leading manufacturer of wide-format inkjet printers and cutting machines for the sign and graphics, textile and apparel and industrial markets. In addition, Mimaki also provides a comprehensive range of supporting products; hardware, software and associated consumable items, such as inks and cutting blades.

From outdoor signage and billboards to interior decoration and furnishing, from packaging and labels to promotional gifts and apparel, Mimaki is committed to developing technology that sets new industry standards, producing machines and products that turn the imagination of our customers into breath-taking reality.

### ... Mimaki delivers

### JV300 series delivers ...

- Fast printing speeds up to 105.9m<sup>2</sup> per hour
- High quality print resolution of up to 1,440 dpi
- Two different printing widths: 1,361mm and 1,610mm
- Choice of multiple eco-solvent and dye sub ink sets:
  - 9-colour options (SS21) including; Orange, Light Black & White inks
  - Vibrant 6-colour dye sub options (Sb53)
- Nozzle Check Unit (NCU) and Nozzle Recovery System (NRS) ensures continuous print operations
- UISS and optional MBIS III on board 2 litre bulk ink system
- 3-way intelligent heater

**SOLVENT & DYE SUB INKS**  
**2 PRINT WIDTHS AVAILABLE**  
**1,440 DPI MAX RESOLUTION**  
**4/6/7/8 COLOUR MODES**  
**105.9m<sup>2</sup>/h MAX. SPEED**

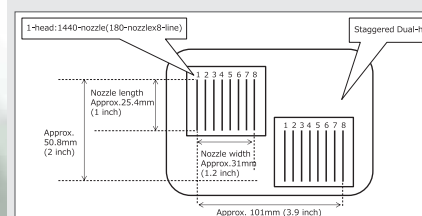
*JV300 Series*  
 JV300-130 / JV300-160



HIGH PRODUCTIVITY

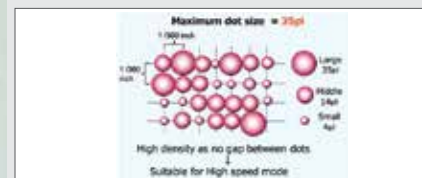
#### Staggered Dual Print Head

Ensures wide band printing, even at high print speeds.



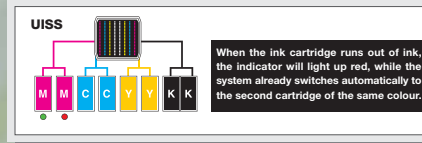
#### Large ink dot size in high speed mode

Delivers high density print by removing the gap between dots.



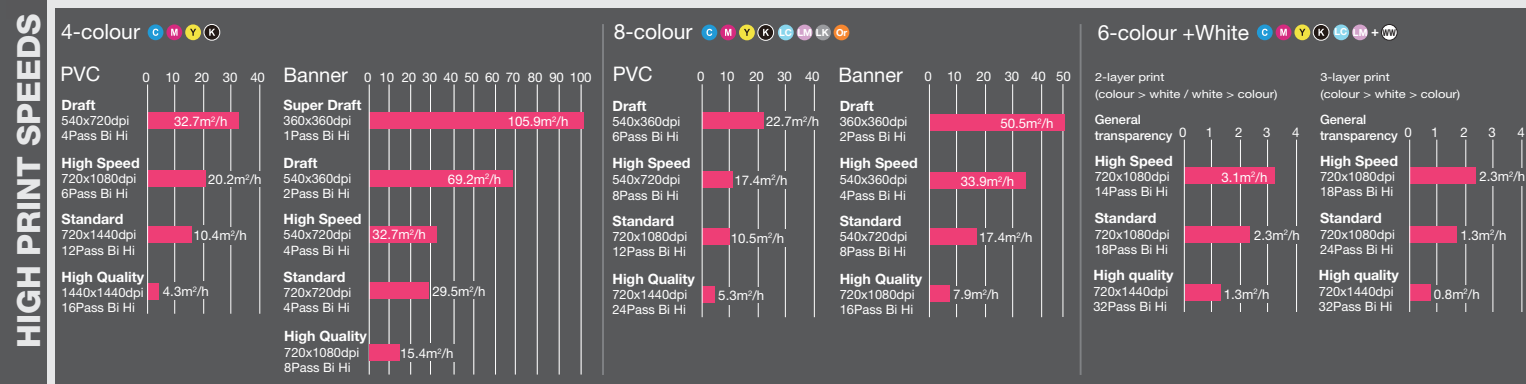
#### Uninterrupted Ink Supply System (UISS)

Utilises two cartridges per colour in 4-colour mode. When one cartridge runs out of ink the system switches automatically to the second cartridge of the same colour, enabling long unattended printing.



**Create ...** Signage, Vehicle graphics, PoS, Banners, Posters, Fashion & Sportswear, Promotional, Exhibition graphics, Stickers, Garment marking, Canvas prints and much more...

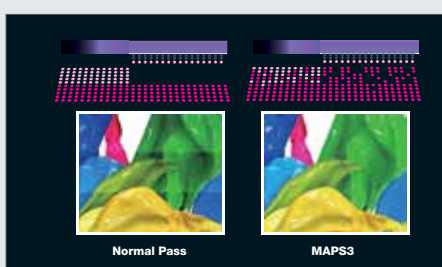
### KEY TECHNICAL FEATURES ...



BEAUTIFUL OUTPUT

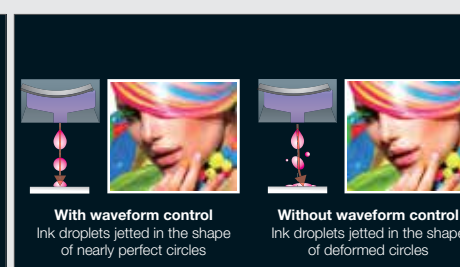
#### MAPS3 (Mimaki Advanced Pass System 3)

Reduces banding by dispersing ink drops between passes.



#### Waveform Control Technology

Ensures high quality print resolution, by jetting ink drops in straight lines with almost perfect round dots, delivering clear and sharp letters, lines and edges.



#### Orange & Light Black SS21 Inks

New orange process ink delivers wider gamut to cover 94% of the PANTONE colour chart. Light black gives superior grey balance control and accurate greyscale printing.

